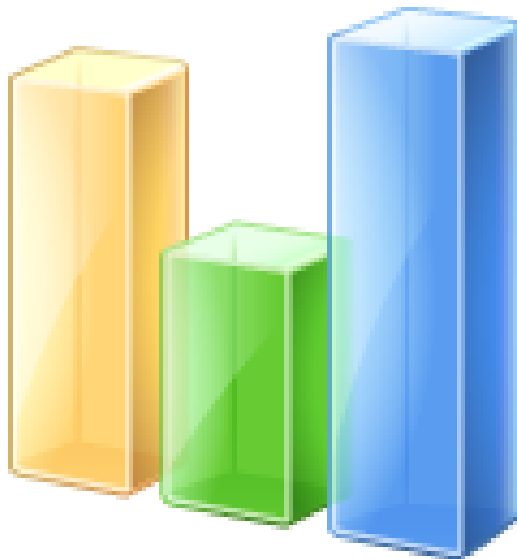


# Market Price Browser

## v1.0



Created by Nasim

This is a small multiple window browser to view Bid/Ask price during trade hour along with other regular information like open, high, low, volume etc. You can observe four different stocks at a time. First select stock name from dropdown menu and click Go button. By default all windows will refresh frequently, but still you can use Refresh All button to update all data at once or use Refresh button to update individual stock.

**Market Price Browser**

File Settings Help

1STBSRS GO Refresh Refresh All ABBANK GO Refresh Index

**Instrument : 1STBSRS**

Buy		Sell	
Buy Price	Buy Volume	Sell Price	Sell Volume
967.00	50	979.00	50
966.25	100	983.75	50
966.00	100	984.00	300
965.25	100	987.00	50
965.00	150	989.00	100
963.50	200	990.00	50
960.25	100	995.00	50
960.00	250	996.00	50
957.50	100	998.00	50
955.25	50	1000.00	100

**Instrument : ABBANK**

Buy		Sell	
Buy Price	Buy Volume	Sell Price	Sell Volume
1027.50	25	1029.00	20
1026.50	300	1030.00	430
1026.00	10	1031.00	15
1025.75	35	1032.00	25
1025.00	10	1033.00	40
1024.50	155	1033.75	20
1024.00	205	1034.75	5
1023.75	30	1035.00	560
1023.50	20	1036.00	15
1023.25	10	1037.00	60

APEXADELFT GO Refresh ACI GO Refresh

**Instrument : APEXADELFT**

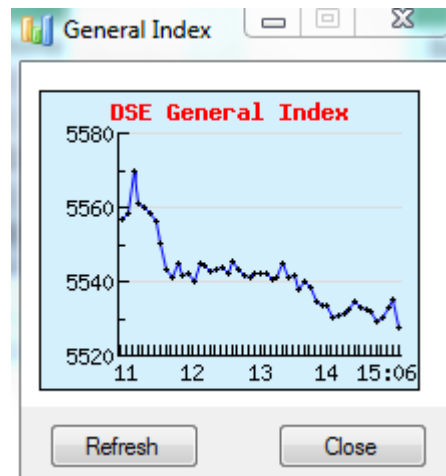
Buy		Sell	
Buy Price	Buy Volume	Sell Price	Sell Volume
2695.00	60	2704.00	20
2691.00	20	2704.75	20
2687.00	40	2707.00	20
2686.00	20	2709.00	200
2683.00	40	2710.00	100
2682.00	60	2715.00	60
2680.00	40	2718.00	20
2670.00	5000	2719.00	20
2668.25	5040	2719.75	40
2665.00	20	2720.00	60

**Instrument : ACI**

Buy		Sell	
Buy Price	Buy Volume	Sell Price	Sell Volume
494.60	250	495.00	200
494.00	50	497.00	300
493.00	350	498.00	250
492.10	500	499.00	800
492.00	200	499.90	100
491.80	50	500.00	800
491.20	100	501.00	50
491.10	100	502.00	200
491.00	800	503.00	50
490.60	100	504.00	100

Internet Connected

During market hour, you can observe the movement of General Index by clicking on the Index button or selecting General Index from File menu. A popup window will appear as shown below.



To add new Symbol or remove untraded Symbol, go to Settings and select Add/Remove symbol. Then write the name of Symbol you want to add or remove. and press Add or Remove button according to your needs.

The figure is a dialog box titled "Add/Remove Symbol". It contains two main sections: "Add New Symbol" and "Remove Symbol".

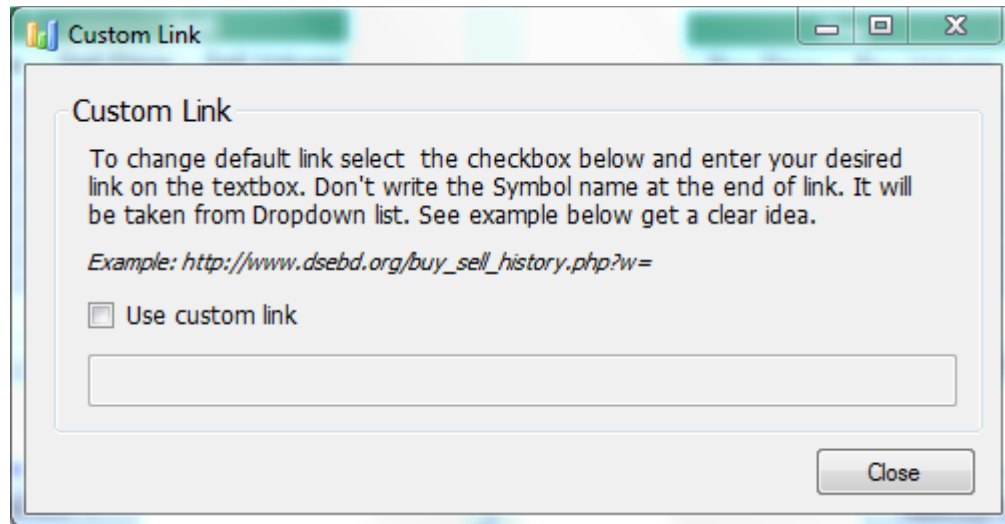
**Add New Symbol**

To add new Symbol just type the name of the Symbol into the box below and click on the Add button. Your desired Symbol will be added to all Dropdown lists.

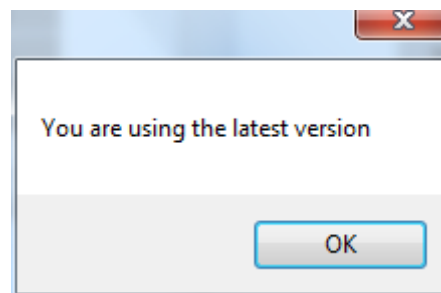
**Remove Symbol**

Write the name of Symbol you want to remove into the textbox below and click the Remove button. Make sure to write in capital letters.

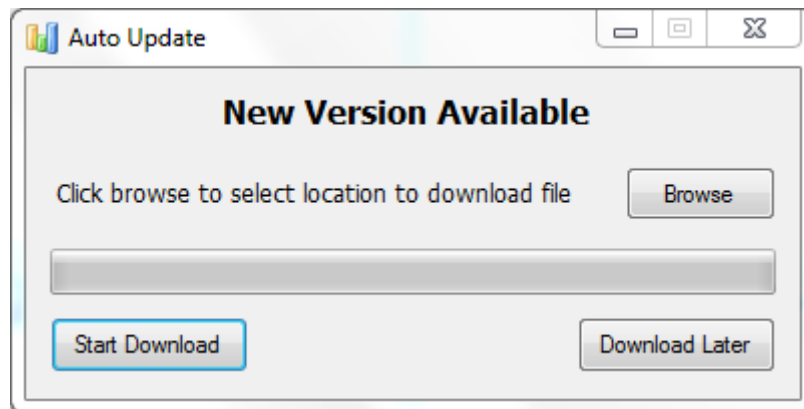
Sometime we experience that DSE links goes down without any notice. In that case you don't need to wait for fixed version of this tool. You can fix it yourself by going Settings and selecting custom link option. Just enable use custom link checkbox and then write down your custom link the textbox.



You can always check for newer version of this software. From Help menu select Check for Update, It will search on server for new version. If there is no new version available it will show a message like below.



If there is any new version available it will notify you and will provide option to download the newest version. In that case click on the Browse button and select location where you want to download the new version. Then click on Start Download button.



To send feedback about this software, go to Help menu and choose feedback option from there. Write your Name, email address and your feedback or suggestion on the form and click send button. You can also send bug report using this feedback form if you are facing any difficulty running this software.

A screenshot of a software window titled "Send Feedback". The window has a standard Windows-style title bar with minimize, maximize, and close buttons. The main content area has a light gray background. It contains three input fields: "Your Name" with a single-line text box, "Your Email Address" with a single-line text box, and "Your Feedback" with a large multi-line text area. At the bottom of the window, there are two buttons: "Send" on the left and "Close" on the right. A horizontal scrollbar is visible at the very bottom of the window.